



GUILDFORD  
BOROUGH

**James Whiteman**  
Managing Director

[www.guildford.gov.uk](http://www.guildford.gov.uk)

Dear Councillor

**PLANNING COMMITTEE – WEDNESDAY 2ND SEPTEMBER 2020**

Please find attached the following:

**Presentations (Pages 1 - 42)**

Yours sincerely

Sophie Butcher, Democratic Services Officer  
01483 444056

Encs

This page is intentionally left blank

**20/P/00511**

**1 Ash Lodge Close**

**Ash**

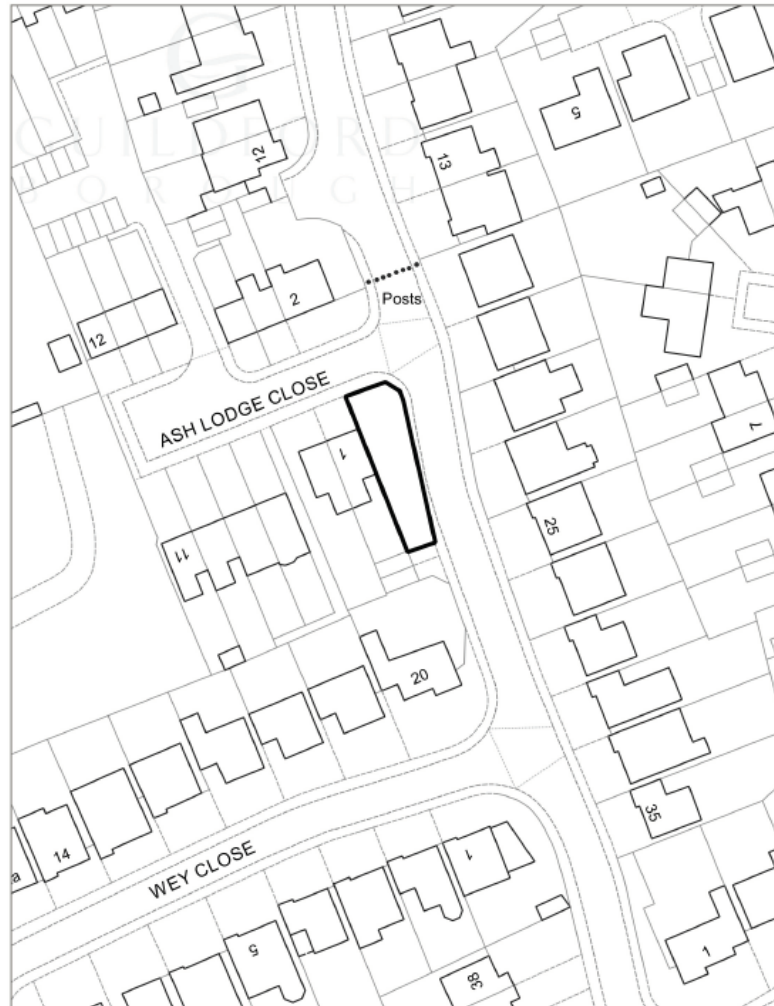
**GU12 6JU**

[Previous](#)

[Next](#)

[Home](#)

20/P/00511 - 1 Ash Lodge Close, Ash GU12 6JU



Site location

© Crown Copyright 2020, Guildford Borough Council.  
Licence No. 100019625.

This map is for identification purposes only and should  
not be relied upon for accuracy.

Print Date: 01/09/2020



Not to Scale



[Previous](#)

[Next](#)

[Home](#)

A3





## Proposed street scene

[Previous](#)

[Next](#)

[Home](#)

Existing  
front



Proposed  
front



[Previous](#)

[Next](#)

[Home](#)

Existing rear



Proposed  
rear



[Previous](#)

[Next](#)

[Home](#)



Existing  
side

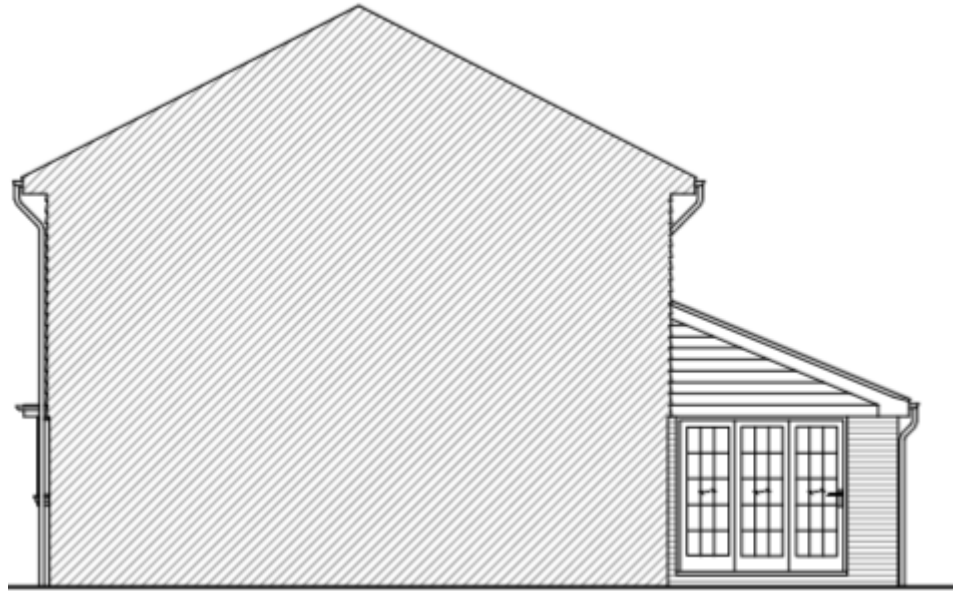


Proposed  
side

[Previous](#)

[Next](#)

[Home](#)

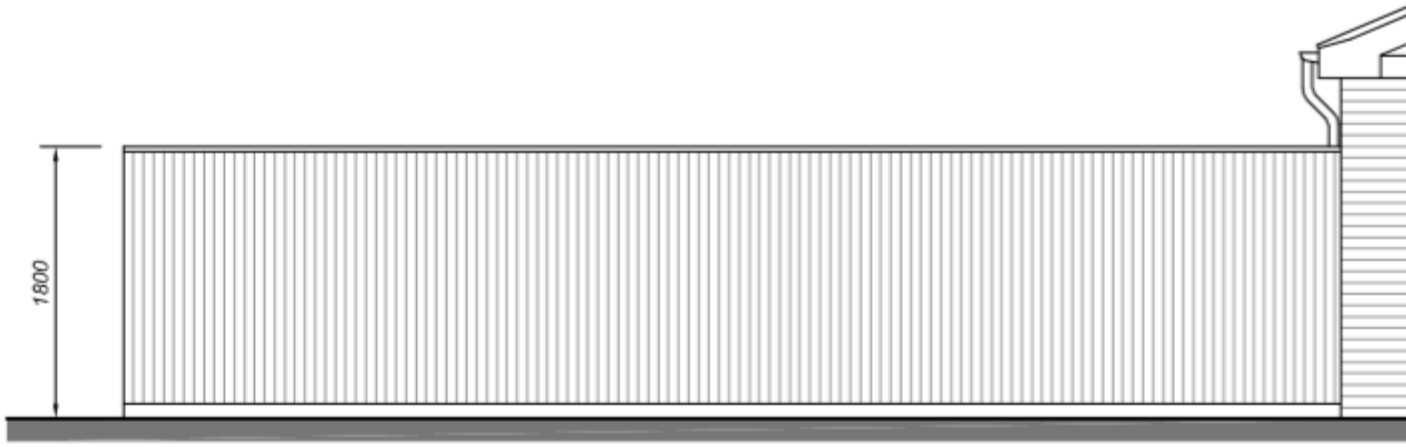


Proposed other side

[Previous](#)

[Next](#)

[Home](#)

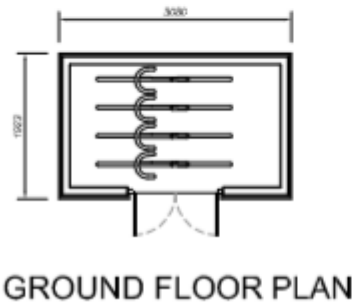
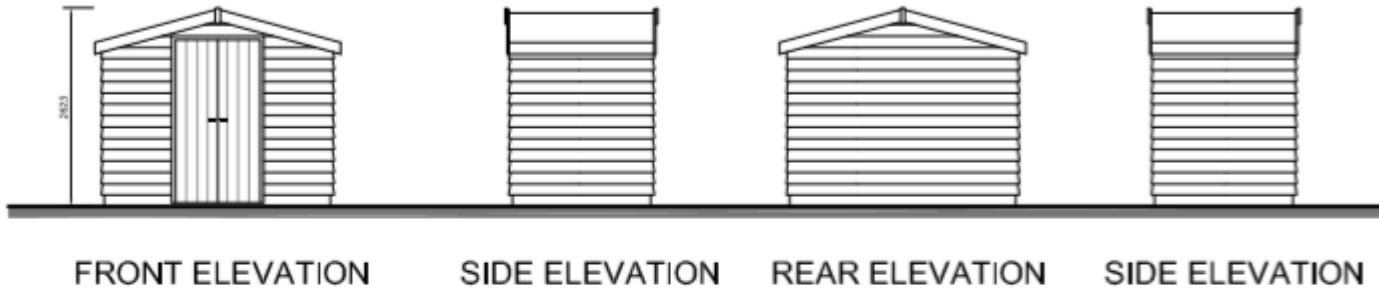


FENCE ELEVATION

[Previous](#)

[Next](#)

[Home](#)



Proposed shed

[Previous](#)

[Next](#)

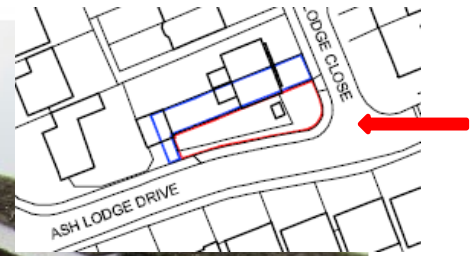
[Home](#)



[Previous](#)

[Next](#)

[Home](#)



[Previous](#)

[Next](#)

[Home](#)



[Previous](#)

[Next](#)

[Home](#)



New development opposite of road

[Previous](#)

[Next](#)

[Home](#)



**20/P/00676**

**1 Little Warren Road**

**Guildford**

**GU4 8PW**

[Previous](#)

[Next](#)

[Home](#)

20/P/00676 - 1 Little Warren Close, Guildford



© Crown Copyright 2020. Guildford Borough Council.  
Licence No. 100019625.

This map is for identification purposes only and should  
not be relied upon for accuracy.

Print Date: 17/08/2020



Not to Scale



[Previous](#)

[Next](#)

[Home](#)





**Aerial view of Little Warren Close**

**Previous**

**Next**

**Home**



Proposed south east elevation (front)



Proposed south east elevation (front) with current permission overlay

[Previous](#)

[Next](#)

[Home](#)



Proposed north west elevation (rear)



Proposed north west elevation (rear) with current permission overlay

[Previous](#)

[Next](#)

[Home](#)



Proposed north east elevation (side)



Proposed north east elevation (side) with current permission overlay

[Previous](#)

[Next](#)

[Home](#)



Proposed south west elevation (side)



Proposed south west elevation (side) with current permission overlay

[Previous](#)

[Next](#)

[Home](#)





[Previous](#)

[Next](#)

[Home](#)



[Previous](#)

[Next](#)

[Home](#)



[Previous](#)

[Next](#)

[Home](#)



[Previous](#)

[Next](#)

[Home](#)



[Previous](#)

[Next](#)

[Home](#)



[Previous](#)

[Next](#)

[Home](#)



[Previous](#)

[Next](#)

[Home](#)



Properties within Little Warren Close

[Previous](#)

[Next](#)

[Home](#)





This page is intentionally left blank

**20/T/00155**

**106 Stoke Road  
Guildford  
GU1 1HB**

[Previous](#)

[Next](#)

[Home](#)

20/T/00155 - 106 Stoke Road, Guildford



© Crown Copyright 2020. Guildford Borough Council.  
Licence No. 100019425.

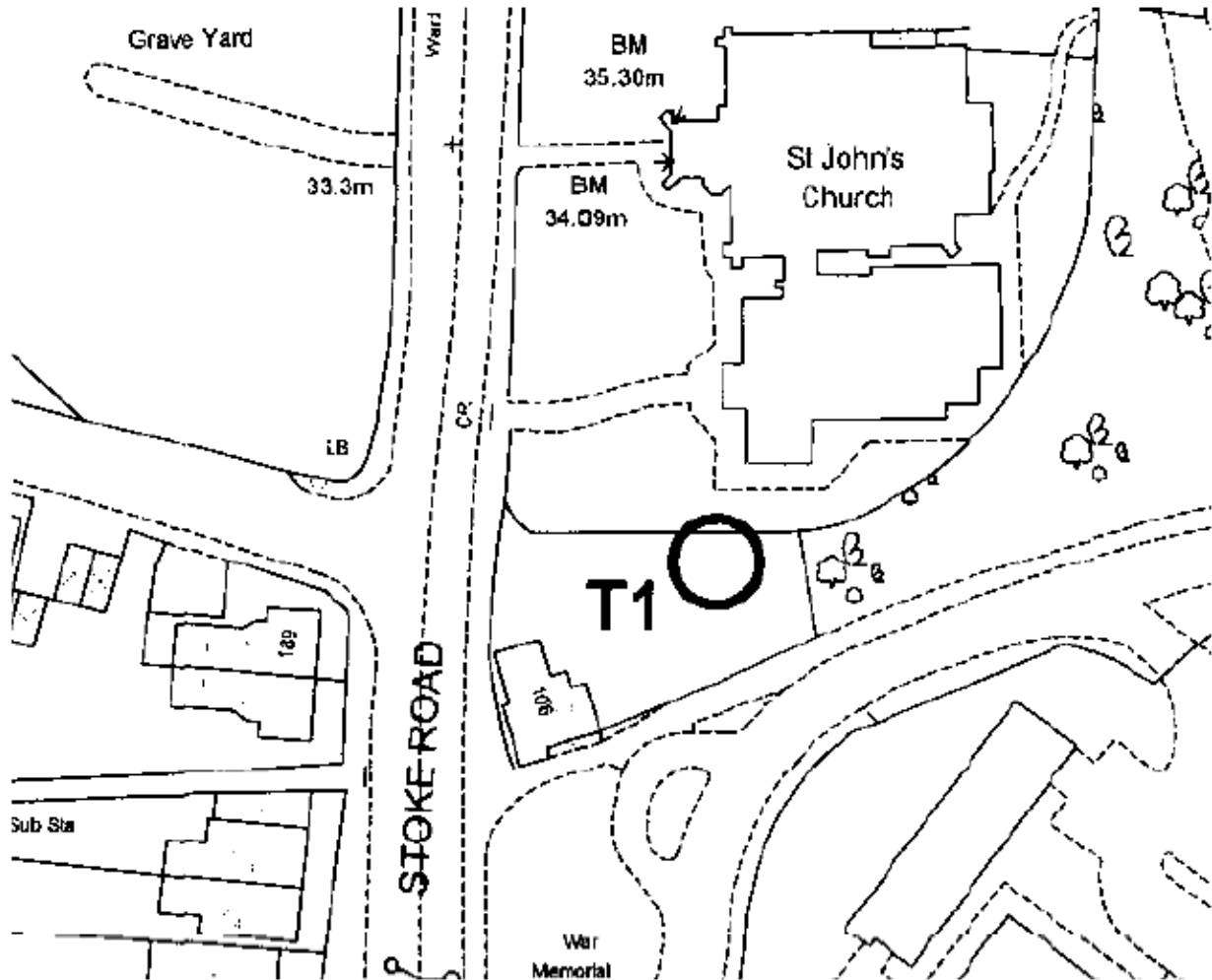
This map is for identification purposes only and should  
not be relied upon for accuracy.

Print Date: 17/08/2020



Not to Scale





Site layout

[Previous](#)

[Next](#)

[Home](#)



View from garden

[Previous](#)

[Next](#)

[Home](#)



View from garden

[Previous](#)

[Next](#)

[Home](#)



**FOR SALE**

01483 576833



View from Joseph's Road

[Previous](#)

[Next](#)

[Home](#)





View from Lido Road with the gates open

[Previous](#)

[Next](#)

[Home](#)



View from Lido Road looking west

[Previous](#)

[Next](#)

[Home](#)



View from St Johns Church looking south

[Previous](#)

[Next](#)

[Home](#)



View from Stoke Road

[Previous](#)

[Next](#)

[Home](#)